

# American Academy of Arts and Letters

633 WEST 155 STREET, NEW YORK, NY 10032



## NEWS RELEASE

Contact: Souhad Rafey (212) 368-5900  
academy@artsandletters.org  
www.artsandletters.org

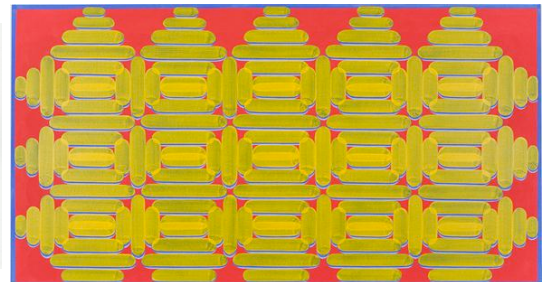
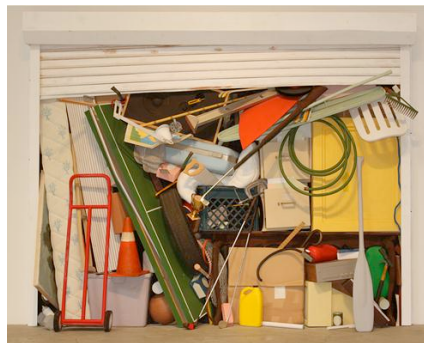
### THE AMERICAN ACADEMY OF ARTS AND LETTERS ANNOUNCES 2013 INVITATIONAL EXHIBITION OF VISUAL ARTS

MARCH 7 – APRIL 14

#### EXHIBITION ARTISTS

Njideka Akunyili  
Clytie Alexander  
Ellen Altfest  
Garo Antreasian  
Eve Aschheim  
Ellen Berkenblit  
Jeff Colson  
Martha Diamond  
Amy Feldman  
Louise Fishman  
Connie Fox  
Marc Handelman  
Hilary Harnischfeger  
Wopo Holup  
Mel Kendrick  
Osamu Kobayashi  
Thomas Kovachevich  
Justen Ladda  
Charles LeDray  
Margrit Lewczuk  
Judy Linn  
Jerome Marshak  
Elaine Mayes  
Donald Moffett  
John Moore  
George E. Ortman  
Sheila Pepe  
Theo A. Rosenblum  
Judith Shea  
Arthur Simms  
Keith Sonnier  
Dan Walsh  
Grace Bakst Wapner  
Tamara Zahaykevich

February 14, 2013 – Over 120 paintings, photographs, sculptures, and works on paper by 34 contemporary artists will be exhibited at the galleries of the American Academy of Arts and Letters on historic Audubon Terrace (Broadway between 155 and 156 Streets) from Thursday, March 7 through Sunday, April 14, 2013. Exhibiting artists were chosen from a pool of nearly 175 nominees submitted by the 250 members of the Academy, America's most prestigious honorary society of architects, artists, writers, and composers.



Top row: Njideka Akunyili, *Beautiful One*, 2012; Martha Diamond, *Light*, 2010; Theo A. Rosenblum, *King Carrot*, 2010; Judith Shea, *Louise Monument: Portrait of Louise Bourgeois*, 2012.  
Middle row: Margrit Lewczuk, *Chrysalis II*, 2012; Jeff Colson, *Roll Up*, 2012; Ellen Berkenblit, *Tigers vs. Witches*, 2013.  
Bottom row: Justen Ladda, *Green, Orange and Blue Mirror*, 2010; Dan Walsh, *Overrun*, 2012.

## ART AWARDS AND PURCHASE PROGRAM

The Academy's art awards and purchase programs serve to acknowledge artists at various stages of their careers, from helping to establish younger artists to rewarding older artists for their accumulated body of work. Paintings and works on paper are eligible for purchase and placement in museum collections nationwide through the Hassam, Speicher, Betts and Symons Funds. In 2013, there are purchase funds available for sculpture. Among the eleven artists whose works were purchased and placed last year were Larry Bell (The Metropolitan Museum of Art, New York, NY), Rochelle Feinstein (Miami Art Museum, Miami, FL), Carrie Mae Weems (The Charles H. Wright Museum of African American History, Detroit, MI), and Nancy Shaver (Hammer Museum, Los Angeles, CA). Since the purchase program's founding in 1946, through the legacy of Childe Hassam, more than one thousand works have been purchased and donated to museums throughout the country.

For further information, please visit [http://www.artsandletters.org/awards2\\_art.php](http://www.artsandletters.org/awards2_art.php).

## THE ACADEMY

The American Academy of Arts and Letters was established in 1898 to "foster, assist, and sustain an interest in literature, music, and the fine arts," and is chartered by Congress. Founding members include William Merritt Chase, Kenyon Cox, Daniel Chester French, Childe Hassam, Henry James, Theodore Roosevelt, Elihu Vedder, and Woodrow Wilson. Each year, the Academy gives approximately one million dollars in awards to artists, architects, writers, and composers. It presents exhibitions of art, architecture, and manuscripts, and subsidizes readings and performances of new musicals. The 115-year-old organization is located in three landmark buildings, designed by McKim, Mead & White, Cass Gilbert, and Charles Pratt Huntington, on Audubon Terrace at 155 Street and Broadway.

## THE INVITATIONAL EXHIBITION OF VISUAL ARTS

**MARCH 7–APRIL 14, 2013**

**Thursdays through Sundays**

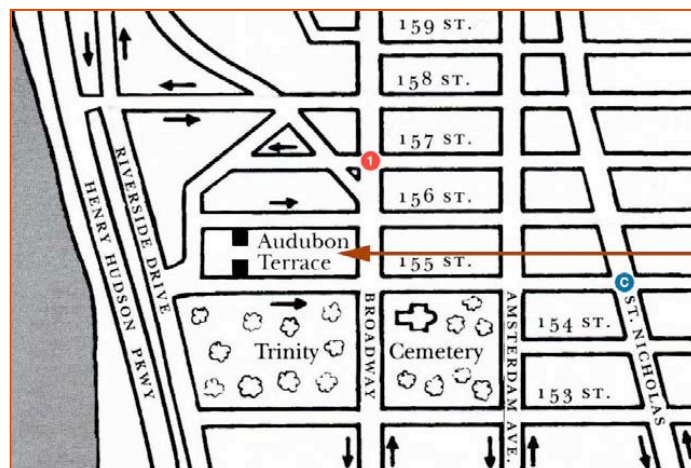
**1 to 4 p.m.**

**Closed Easter weekend (March 29-31).**

Enter on Audubon Terrace, west side of Broadway  
between 155 and 156 Streets, New York City.

#1 train to 157 Street and Broadway; Bus: M4, M5 to 155 Street and Broadway

[www.artsandletters.org](http://www.artsandletters.org)



Entrance to galleries  
through terrace