

Art Basel Hong Kong  
Booth 1C09  
May 15-18, 2014  
Hong Kong Convention and Exhibition Centre (HKCEC), Hong Kong



Hernan Bas, *The Guru*, 2013-14, acrylic on linen, three panels, each: 84 x 72 in (213.4 x 182.9 cm); overall dimensions: 84 x 216 in (213.4 x 548.6 cm).

## ARTISTS EXHIBITED

Hernan Bas  
Billy Childish  
Mary Corse  
Tracey Emin  
Teresita Fernández  
Klara Kristalova  
MR.  
Angel Otero  
Alex Prager  
Robin Rhode  
Jennifer Steinkamp  
Do Ho Suh  
Juergen Teller  
Mickalene Thomas  
Erwin Wurm

New York, May 9, 2014—For the second edition of Art Basel Hong Kong, Lehmann Maupin is pleased to present new artworks by Hernan Bas, Tracey Emin, Teresita Fernández, MR., Angel Otero, Do Ho Suh, Mickalene Thomas and Erwin Wurm, alongside pieces by Billy Childish, Mary Corse, Klara Kristalova, Alex Prager, Robin Rhode, Jennifer Steinkamp and Juergen Teller.

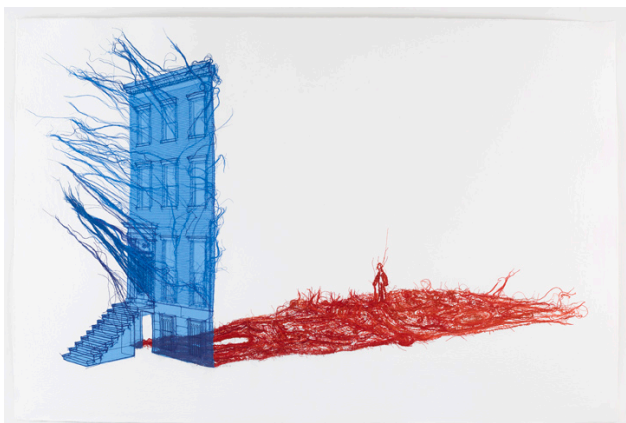
Running concurrently at Lehmann Maupin's gallery in the Pedder Building will be the inaugural Hong Kong exhibition of works by American artist **Hernan Bas**, titled *Case Studies*, which will feature the artist's newest series of expressionistic and highly detailed figurative paintings.



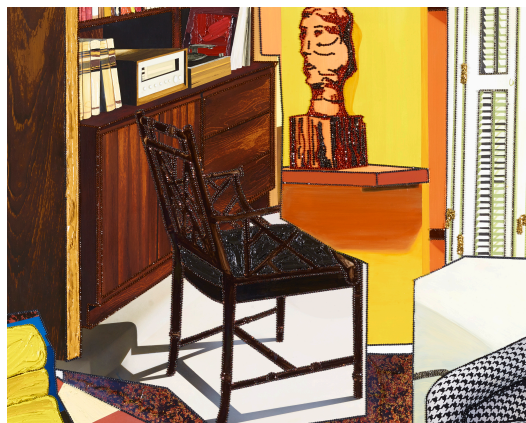
Tracey Emin, *Portrait from the past*, 2014, embroidered cotton, 50.39 x 57.09 in (128 x 145 cm).



Jennifer Steinkamp, *Garlands 1*, 2013, video installation, dimensions variable.



Do Ho Suh, *Blueprint*, 2014, thread, cotton, and methyl cellulose, 40 x 60 in (101.6 x 152.4 cm).



Mickalene Thomas, *Interior: Two Chairs and One Yellow Couch*, 2014, rhinestone and acrylic on panel, 84 x 60 in (213.4 x 152.4 cm).

### About Lehmann Maupin

Founded in 1996 by partners Rachel Lehmann and David Maupin, Lehmann Maupin has fostered the careers of a diverse group of internationally renowned artists, both emerging and established, working in multiple disciplines and across varied media. With three locations—two in New York and one in Hong Kong—the gallery represents artists from the United States, Europe, Asia, South America, Africa and the Middle East. Known for championing artists who create groundbreaking and challenging forms of visual expression, Lehmann Maupin presents work highlighting personal investigations and individual narratives through conceptual approaches that often address such issues as gender, class, religion, history, politics and globalism.

### Current & Upcoming Exhibitions

Adriana Varejao, *Polvo*, Through June 21, 2014, New York

Lee Bul, Through June 21, 2014, New York

Hernan Bas, *Case Studies*, May 13 – June 28, 2014, Hong Kong

Mickalene Thomas, *Tête de Femme*, June 26 – August 8, 2014, New York

Gilbert & George, *Films and Video Sculptures, 1970-1981*, June 26 – August 8, 2014, New York

For more information on the fair and artists, please contact Marta de Movellan at Lehmann Maupin at +1 212 255 2923 or visit [www.lehmannmaupin.com](http://www.lehmannmaupin.com).

###